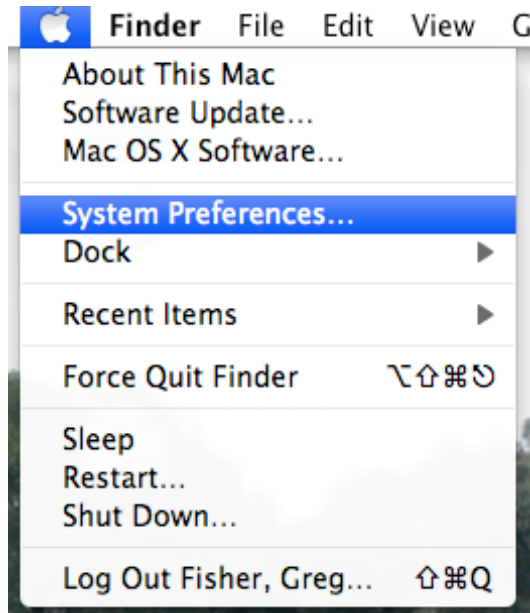
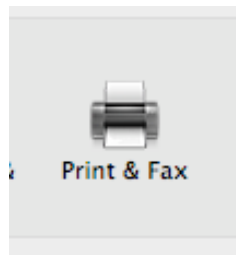


Copy Center Printing for Mac OS 10.5 & 10.6

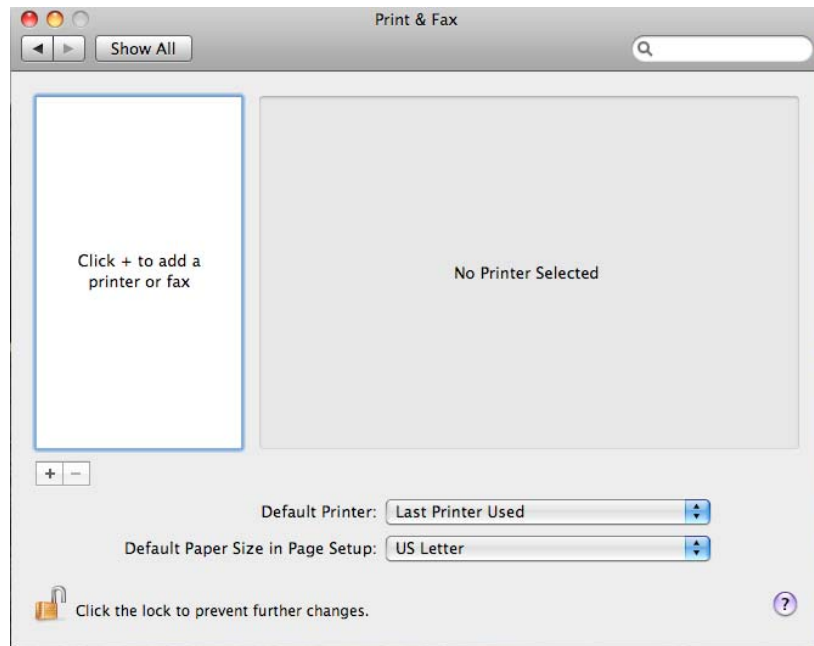
1. In the upper left corner of the screen **click** on the **Apple** and select **System Preferences...**



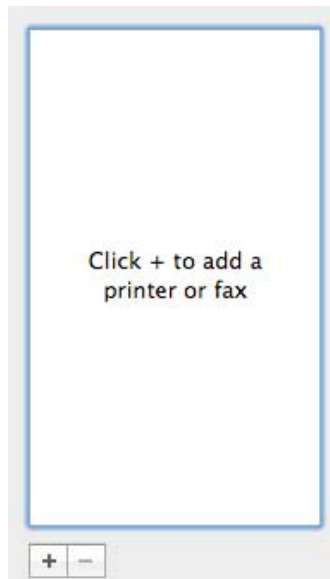
2. In **System Preferences** select **Print and Fax**



3. The image below is the Print and Fax screen in Mac OS 10.5 Leopard.



4. To add the printer Click the plus (+) sign.



5. For the **COPY-COLOR** you will need to download the driver first and then install the printer. The driver file is located at the Xerox website. [Click on this link to go to the download page.](#) Download the file and open the Print Driver folder and click on OSX Installer.

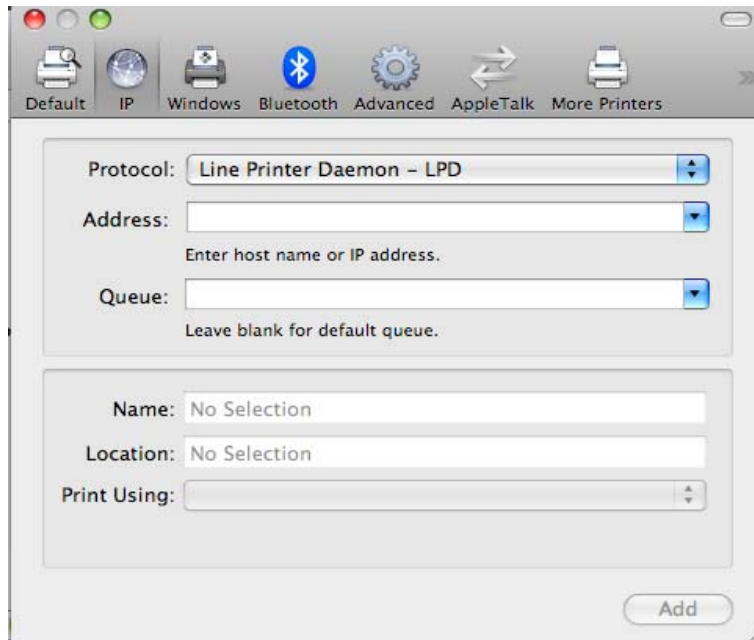
Name of Driver: [Postscript Printer Driver for DocuColor 242/252/260.](#)

6. For the **COPY-BLACK** you will need to download the driver first and then install the printer. The driver file is located at the Xerox website. [Click this link to go to the download page.](#) Once the file downloads it will mount and open to install the driver.

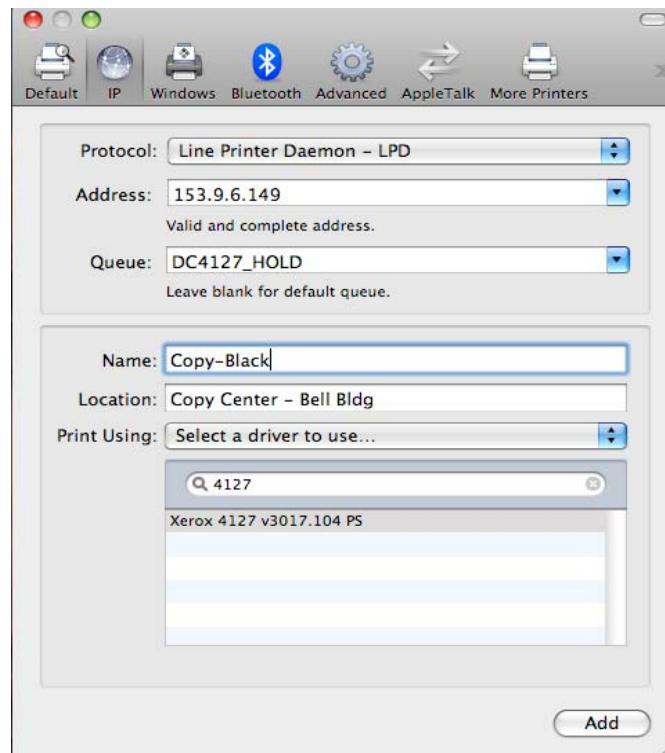
Name of Driver: [4112/4127 Mac OS 10.6 Drivers](#)

7. The screen below will open and you will need to select **IP** from the menu bar from the top of the screen. You will then need to enter the **Host Name** of the printer in the **Address** line or IP address. (this is provided from helpdesk when the printer queue is created for network printing.) Copy that name to the **Queue** line. Use the table below to setup the copy center printers. Enter the data as written below into the appropriate field.

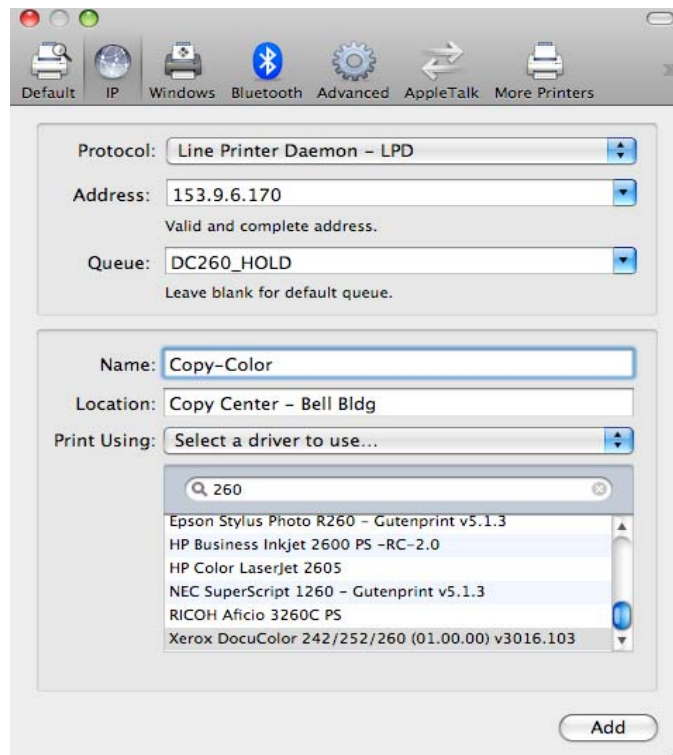
	Copy Center Black Printer	Copy Center Color Printer
Address:	153.9.6.149	153.9.6.170
Queue:	DC4127_HOLD	DC260_HOLD
Name:	Copy-Black	Copy-Color
Location	Copy Center – Bell Bldg	Copy Center – Bell Bldg
Print Using	Xerox DocuCentre 4127	DocuColor 240-250 PS



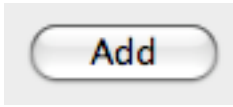
8. Once filled out the Copy Center Black print window will look like below:



Once Filled out the Copy Center Color print window will look like below:



9. **Click Add.**



10. Repeat for the other printer.